

# PROTECTED LAND SCORECARD

## Contra Costa County Climate Leaders

A project of Generation Green - a 501(c)3 Nonprofit organization

Find Links to Other Local Government Policy Opportunities at  
[www.cccclimateleaders.org](http://www.cccclimateleaders.org)



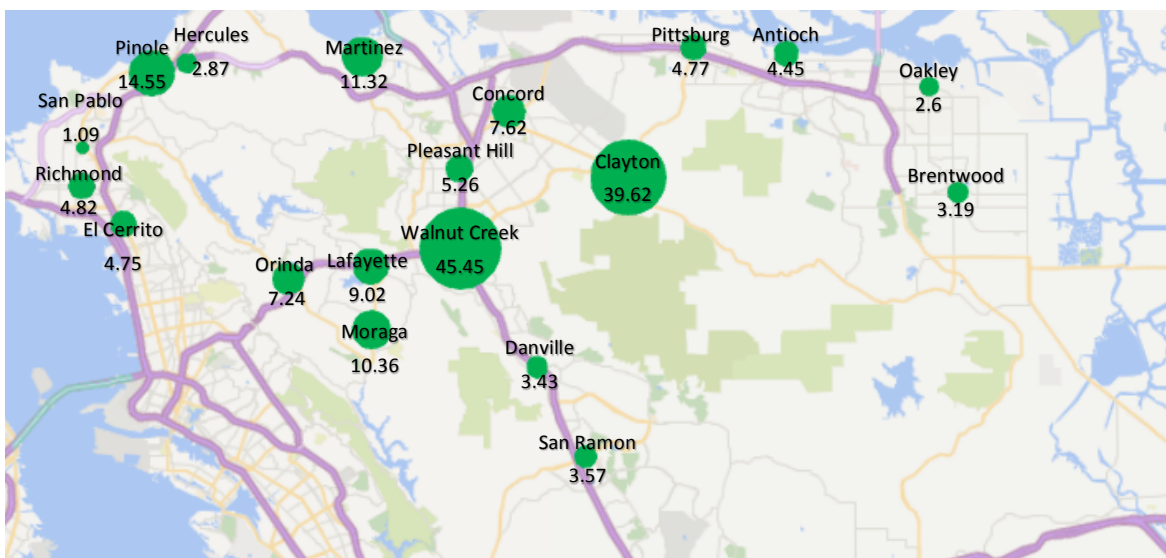
Rank	City	City owned protected land per 1000 people
1	Walnut Creek	45.45
2	Clayton	39.62
3	Pinole	14.55
4	Martinez	11.32
5	Moraga	10.36
6	Lafayette	9.02
7	Concord	7.62
8	Orinda	7.24
9	Pleasant Hill	5.26
10	Richmond	4.82
11	Pittsburg	4.77
12	El Cerrito	4.75
13	Antioch	4.45
14	San Ramon	3.57
15	Danville	3.43
16	Brentwood	3.19
17	Hercules	2.87
18	Oakley	2.60
19	San Pablo	1.09

Source: [GreenInfo Network's CA Protected Area's Database](#), [US Census](#)

The purpose of this scorecard is to measure the per capita land conservation of each city in Contra Costa County.

The data originates from [GreenInfo Network's California Protected Areas Database \(CPAD\)](#).

"A GIS inventory of all parks and other open space lands that are owned in fee by agencies or nongovernmental groups for the purpose of maintaining their use as open space resources. CPAD includes neighborhood parks, wildlife refuges, regional and county parks and preserves, some land trust holdings, and state and federal parks, trust lands and forests – over 950 agencies own the 49 million acres of land in the CPAD inventory."



# PROTECTED LAND SCORECARD

## Contra Costa County Climate Leaders

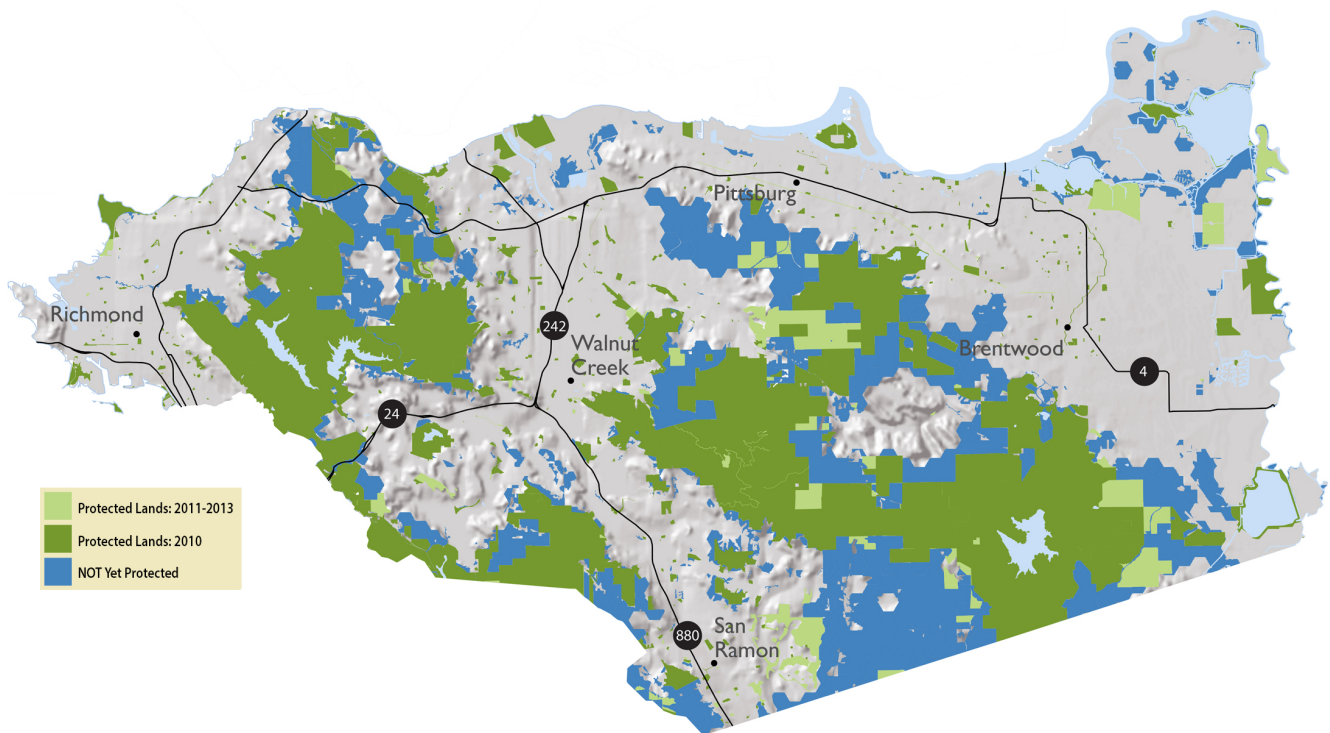
A project of Generation Green - a 501(c)3 Nonprofit organization

Find Links to Other Local Government Policy Opportunities at  
[www.cccclimateleaders.org](http://www.cccclimateleaders.org)



“The Conservation Lands Network is a regional vision and guide to protect the Bay Area’s irreplaceable landscapes.”

- The goal is to protect 2 million acres of land in the Bay Area.
- By 2013, more than 1.3 million acres had been successfully protected.
- Between 2010 and 2013 Contra Costa contributed to this effort by protecting 13,664 acres.



Source: [Conservation Lands Network Progress Report—Contra Costa County](#)

- Acres of protected land are shown in light and dark green
- Acres collectively identified as being essential or important to Bay Area Conservation Goals—but not yet protected—are shown in blue.
- This blue area consists of approximately 80,206 acres.



# PROTECTED LAND SCORECARD

## Contra Costa County Climate Leaders

A project of Generation Green - a 501(c)3 Nonprofit organization

Find Links to Other Local Government Policy Opportunities at  
[www.cccclimateleaders.org](http://www.cccclimateleaders.org)



- Contra Costa County, as a whole has done a good job of managing growth and conserving natural resources.
- Contra Costa County's transportation sales tax, Measure J significantly improved transportation planning policies by supporting transit development.
- However, the Contra Costa cities—especially those to the east—lack effective urban growth boundaries, putting thousands of acres of lands at risk of sprawl development.
- City policies on affordable housing, density, and park proximity could be strengthened to increase smart growth scores.

Bay Area Smart Growth Rank	City	Smart Growth Score
16	Walnut Creek	50
20	Richmond	49
21	Pittsburg	48
26	San Ramon	46
43	Hercules	38
50	Oakley	35
51	Pleasant Hill	34
52	Lafayette	33
55	Concord	31
56	Brentwood	31
63	Clayton	28
64	El Cerrito	28
69	Antioch	26
74	San Pablo	24
77	Martinez	22
84	Pinole	17
89	Danville	14
92	Moraga	13
98	Orinda	10

Source: [Greenbelt Alliance's Smart Growth Scorecard](#)

[Greenbelt Alliance's](#) Smart Growth Scorecard measured cities "growth boundaries, park proximity, affordable housing, mixed-use development, density, parking, and development standards."

Counties were measured by separate criteria, including managing growth, permanently protecting open space, preserving agricultural land, conserving natural resources, and offering transportation choices.



EAST BAY  
energy  
watch

